

# ACM 4810 Automatic Cash Machine

(also on Pay on foot)



## PARKING SYSTEM



The **Automatic Cash Machine 4810** is the high level serie of Nuraia. The serie 4810 is the high performance of Nuraia ticket unit for the automatic payments. The units are built in an elegant housing with the big front plate in glass back painted with some zones back-lighted depending of the function.

A large display 26 "is used for all models. All the necessary information can thus be available in a simple and clear form. A dedicated area of the screen is used to house video advertising that can be loaded easily by outside suppliers via web connection. The large display, together with the modularity of the ACM, makes it possible to sell also other services (such as ticketing for buses, theaters, paying fines, LTZ ticket) easily increasing profitability. Behind the front glass, in the upper part, can be installed a large scrolling LED display. Service messages to be read even at a great distance.

The components are on the same plane of the glass maintaining overall very clean and elegant line.

The final result is a pleasing element suitable for being integrated in a modern building.

The ACM is modular: can be delivered with three different type of banknote reader/dispencer, three different printer depending of the usage. The coin management is very simple and effective. There is only one unit for all different type of coin, so the mechanics is very simple and typical coin-jam is avoided.

All the main internal components are mounted on removable slides for easy and convenient inspection and maintenance.

It can works in downgraded mode when the network is down and update the data into the server when the network comes up.

### FEATURES

#### BARCODE

The reader/writer Barcode Unit installed, permits the managing of subscriptions on barcode tickets and the production of the lost tickets.

document obtained using a web booking procedure at home, containing the QR-CODE, will allow the access to the parking functions.

#### RF/ID

The specific reader installed on the front of the Automatic Cash Machine permits the managing of RF/ID cards and the recharge of subscriptions based on this technology.

#### BANKNOTE

Three different type of banknote management. Change in 1 to 3 type of notes

#### COIN

Acceptance and dispensing of all type of coin

#### QR-CODE

A QR-CODE reader can be installed on the front of the Automatic Cash Machine. With this solution a preprinted

#### VOICE MESSAGGES

Text to speech Loquendo in 5 different languages. The ticket information follow the language selection also.

REV. 01-2017 / Technical modifications reserved without notice. Illustrations and descriptions may also include special options. This document is property of Nuraia. Nuraia takes no responsibility for typographic errors.

# ACM 4810

## Technical Specifications

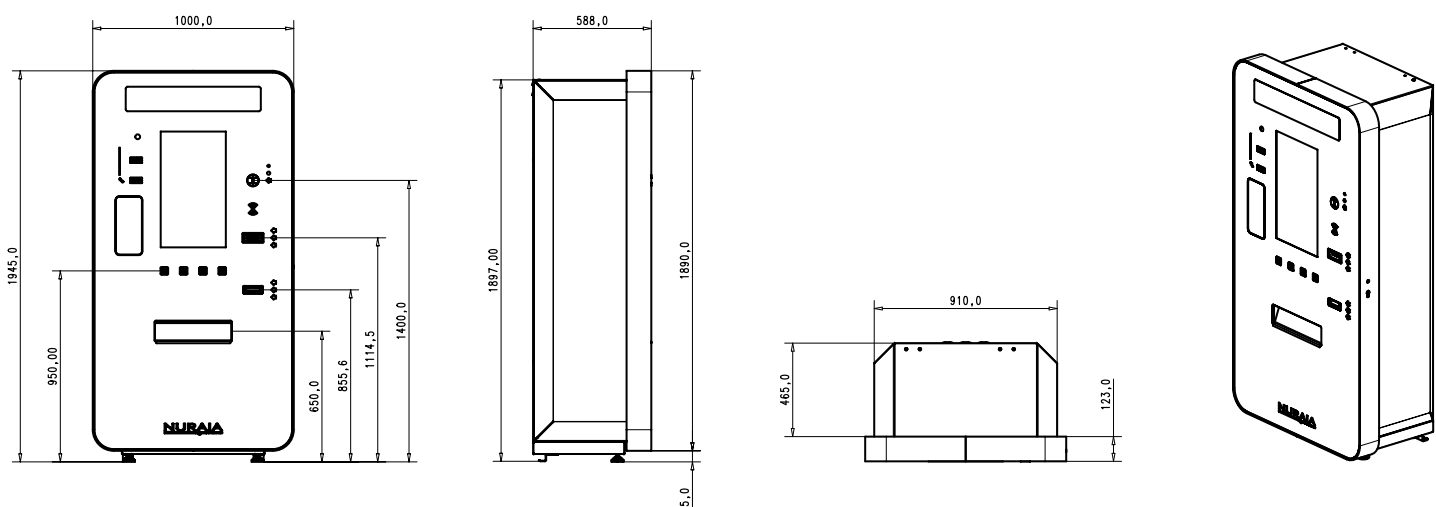
DIMENSIONS	1.000 x 1.945 x 588 mm. (whd)
WEIGHT	Pay Station: 300 Kg
OPERATING TEMPERATURE	Temperature Range: -30°C / +60°C (including consideration of insulation) Air Humidity: - ±0 % ... 90 %
POWER SUPPLY	230V /50Hz 200VA (Additional 700 VA for heating/ventilation and 18 VA for illuminated top)
ACCESSIBILITY	Internal service light Display turnable 90° for service operations Money components installed on sliding chassis
USER INTERFACE	26" LCD color HDMI display 1.000 mcd/m2 Capacitive touch screen
HOUSING	<ul style="list-style-type: none"> <li>galvanized iron; stainless steel as option</li> <li>Steel door with 6mm tempered glass</li> <li>(Standard color RAL9005/9006)</li> </ul>
SECURITY	Different keys for any level of access, Monitoring with sensors and with recording of: <ul style="list-style-type: none"> <li>maintenance</li> <li>withdrawal</li> <li>opening of Cashbox</li> </ul>
OPERATING SYSTEM	Linux Ubuntu 10.4
PRINTING UNIT	Ticket printer ISO standard with cutter • Receipt printer (paper roll)
BANKNOTES ACCEPTOR	Type "JCM VEGA" <ul style="list-style-type: none"> <li>Acceptance of 5 types of banknotes</li> <li>Recognition rate min. 90 %</li> <li>Stack box for 500 banknotes</li> </ul>
COIN PROCESSING UNIT	Coin Processing (Standard): <ul style="list-style-type: none"> <li>Acceptance of up to 6 coin types</li> <li>6 refilling coin stores for one coin type each</li> <li>Content: 700-900 coins per coins store depending on the size of the coins</li> <li>Issue of 6 different coin types</li> <li>Self-locking coin box made of stainless steel, content 10 dm³ for approx. 8.000 coins</li> <li>Self-refilling coin processing system with coin safe</li> <li>Multifunction Hopper with automatic detection of coins</li> </ul>
BAR CODE SCANNER	Barcode ID 2D QR CODE
SERVER	NMTP server for entry and exit stations Local replica of main data-base for off-line functioning SMS server for messaging (option)
OPTIONS	MIFARE (ISO14443A) card reader or EM based on proximity card reader. Certified EMV II Solution for Credit Card payments. Sound alarm for intrusion attempts (opening without the use of RFID badge) SMS server for messaging VOIP SIP Intercom Illuminated top Steel pedestrian

### STANDARD VERSION

- touch screen display (26")
- Multilanguage instructions
- Payments on banknotes, coins, credit cards and change in notes (1-3 denomination) and coins
- Operative System LINUX (Ubuntu)
- Three access levels for operators with the first one by electronic badge (RF/ID).
- Access to the reserved area (cash boxes) by locks
- Print of reports for any operation of withdrawal and recharge operations.
- Heating, fresh-air ventilator
- RF/ID for MIFAR cards
- 400W Heater and fresh-air ventilator
- color RAL9007 (door) and RAL9017 ( body)

### OPTIONS

- Credit card reader
- scrolling LED display
- Intercom system (digital and Voip) with call button
- Receipt printer / fiscal printer
- Housing stainless steel made
- Special vending machine functions ( call for detail )
- UPS



REV. 01-2017 / Technical modifications reserved without notice. Illustrations and descriptions may also include special options. This document is property of Nuraia. Nuraia takes no responsibility for typographic errors.

## TRM 4810 Entry and Exit Stations



## PARKING SYSTEM



The serie **4810** is the high performance of Nuraia ticket unit for lane in the parking system. The units are built in an elegant housing with the front plate in glass back painted with some zones back-lighted when the car is on the loop. The intercom has a capacitive pushbutton on the back-glass and it is visible when the car is on the loop only, same for the RF/ID card zone.

Two modern traffic lights with a two-color LED bar to scroll are integrated in the housing.

The body is a mix of aluminum and steel. The final result is a pleasing element suitable for being integrated in a modern building.

The units are modular: the entrance and exit units can drive three different type of printer, changing from double feeder printer to a single manual scanner.

They manages barcode tickets, drive the barrier and are ready to interface long range UHF readers.

They works in downgraded mode when the network is down and update the data into the server when the network comes up.

The CPU has a local replica of the main-database for the stand alone functioning when the network connection is not available. Automatic synchronization between local and central database when the network connection is restored. CLOUD server is available on VMware vSphere.

There is an integrated SMS server for sending warnings and alarms events to the phone of the technical operators.

The 4810 serie can be upgraded with NPR, camera recording video of all entrance and exit cars, etc

### FEATURES

- Steel housing
- Graphic color display 7" for customers and service information
- Backlit capacitive push-button for ticket request
- Double feeder printer, with capture function
- Stand-alone function
- speech messages
- Full TCP/IP
- RF/ID reader
- Fanfold tickets 180g/m2 management
- Output relay for drive an extra sliding gate
- Input for opening the barrier from intercom command
- 400W Heater and fresh-air ventilator
- Color RAL9007 (door) and RAL9017 (body)

REV. 01-2017 / Technical modifications reserved without notice. Illustrations and descriptions may also include special options. This document is property of Nuraia. Nuraia takes no responsibility for typographic errors.

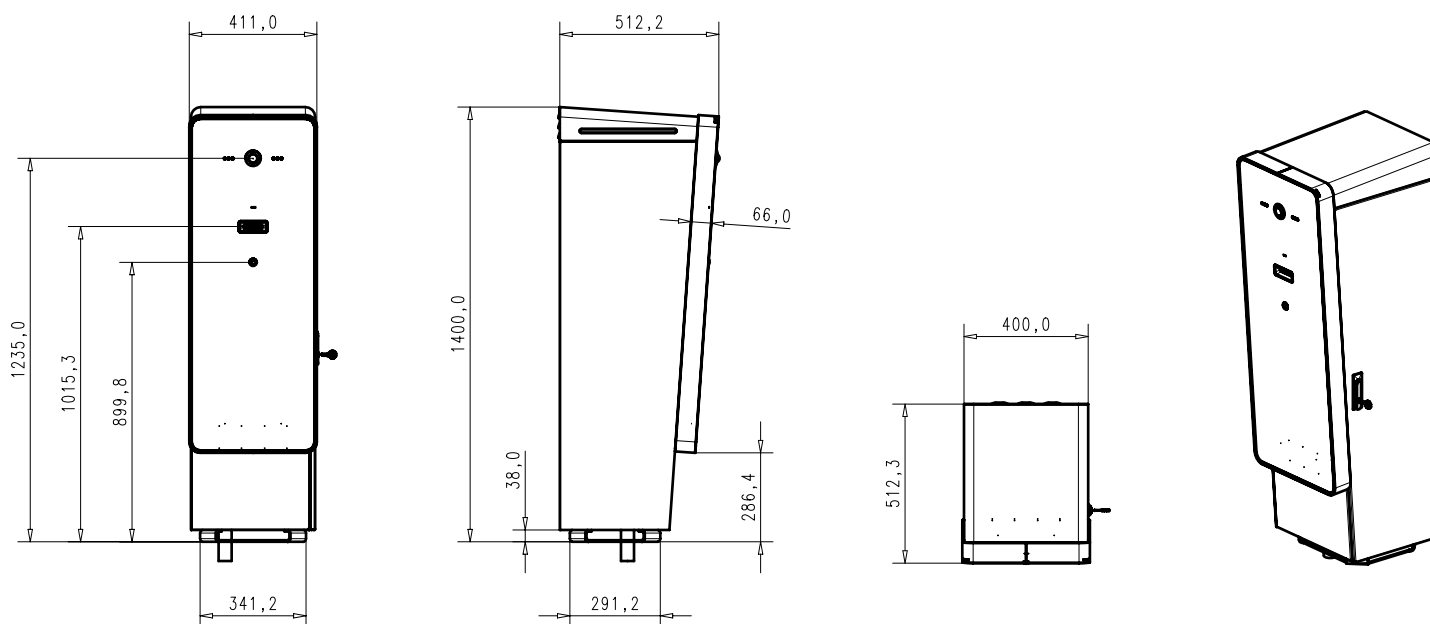
# TRM 4810

## Technical Specifications

DIMENSIONS	503 x 1.363 x 406 mm. (whd)
WEIGHT	10 Kg
OPERATING TEMPERATURE	Temperature Range: -30°C / +50°C
	Air Humidity: - ±0 % ... 95 %"
POWER SUPPLY	230V /50Hz 100VA (Additional 300 VA for heating/ventilation)
ACCESSIBILITY	Side door with key locks
USER INTERFACE	<ul style="list-style-type: none"> <li>• 7" graphic color LCD</li> <li>• Backlit pushbutton for ticket request</li> <li>• Push button for intercom call"</li> </ul>
READ WRITE TICKET UNIT	Entry Station: 3 different type of thermal printers, depending of the features and the price * PRN-004 - ticket (fanfold) printer with double feeder, integrated scanner, capture (*standard) <ul style="list-style-type: none"> <li>• PRN-006 - ticket (fanfold) printer with integrated scanner and capture</li> <li>• PRN-005 - ticket (fanfold) printer</li> </ul> Exit Station: 2 different type of terminals, depending of the features and the price <ul style="list-style-type: none"> <li>• PRN-004 - ticket (fanfold) printer with double feeder, integrated scanner, capture</li> <li>* PRN-002 - ticket reader with capture function (* standard)</li> <li>• SCN-001 - laser scanner</li> </ul>
HOST INTERFACE	Ethernet. Full TPC/IP
OPTIONS	<ul style="list-style-type: none"> <li>• UHF reader ( ready to install )</li> <li>• Intercom module with capacitive backlight button</li> <li>• PRN-004 - ticket (fanfold) printer with integrated scanner and capture</li> <li>• PRN-005 - motorized unit for reading and capture ticket</li> <li>• ANPR Camera ( fully integrated)</li> <li>• n.2 External Cameras for recording the passage</li> <li>• QR code reader</li> </ul>
SERVER	<ul style="list-style-type: none"> <li>• Local server for stand alone function when network drop.</li> <li>• NMTP su server</li> <li>• SMS/email server</li> <li>• WiFi connection (option)</li> </ul>
INTERCOM	Ready to install intercom module and capacitive button.
TICKET	<ul style="list-style-type: none"> <li>• Thermal ticket in fanfold 3 footprint</li> <li>• n. 2 Box ticket 5.000 tickets @ 3 footprint</li> </ul>

### OPTIONS

- UHF reader
- Intercom system (digital and Voip) with call button



REV. 01-2017 / Technical modifications reserved without notice. Illustrations and descriptions may also include special options. This document is property of Nuraia. Nuraia takes no responsibility for typographic errors.